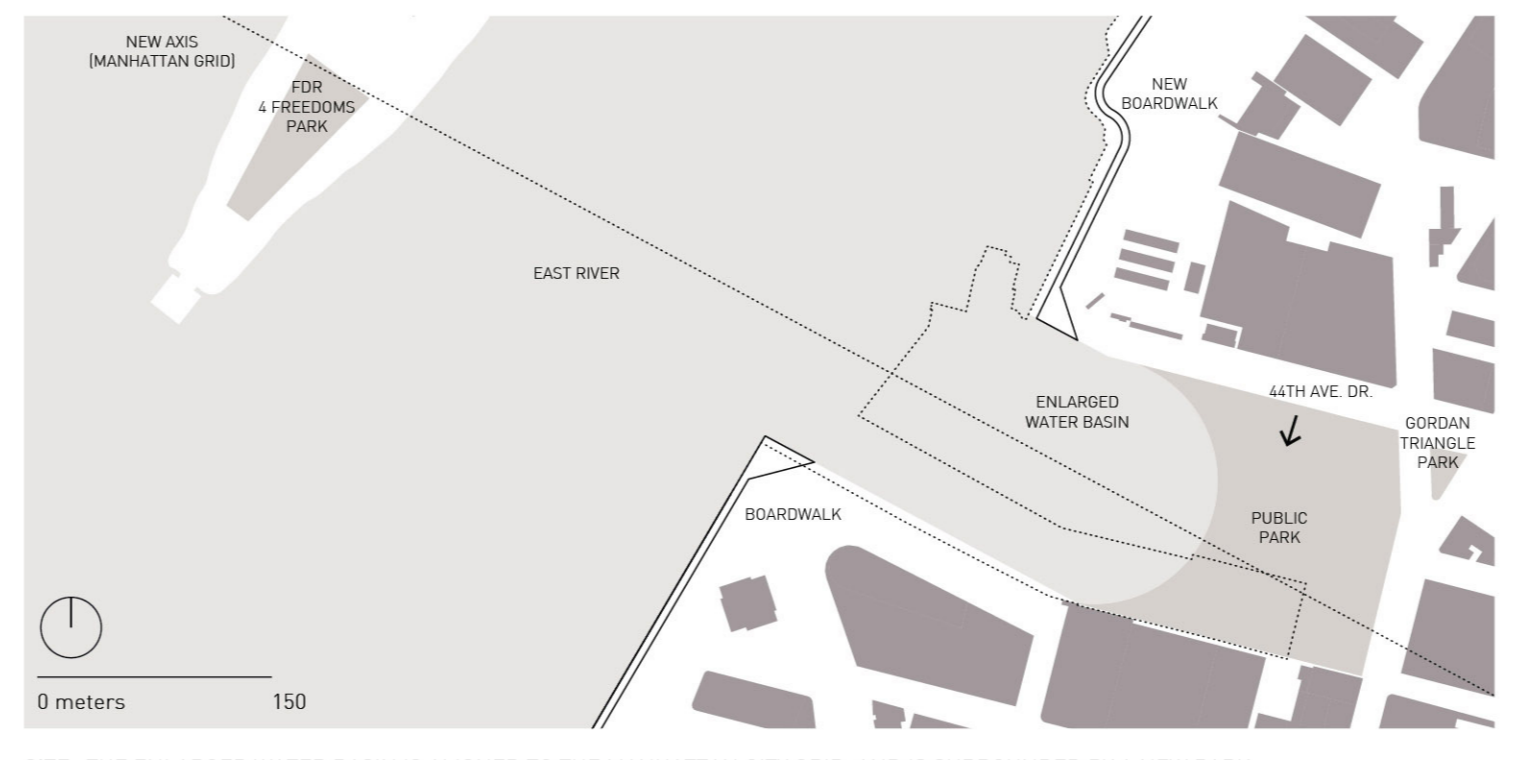
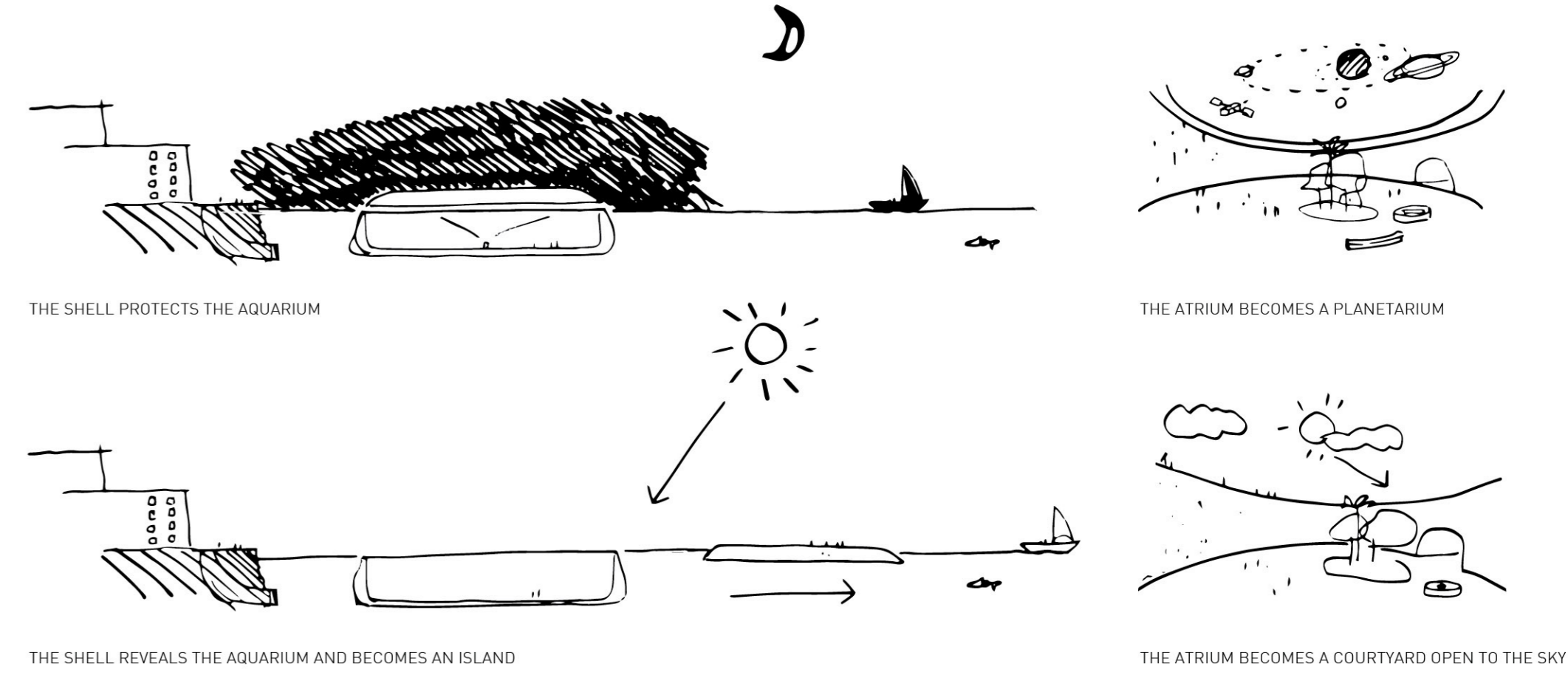
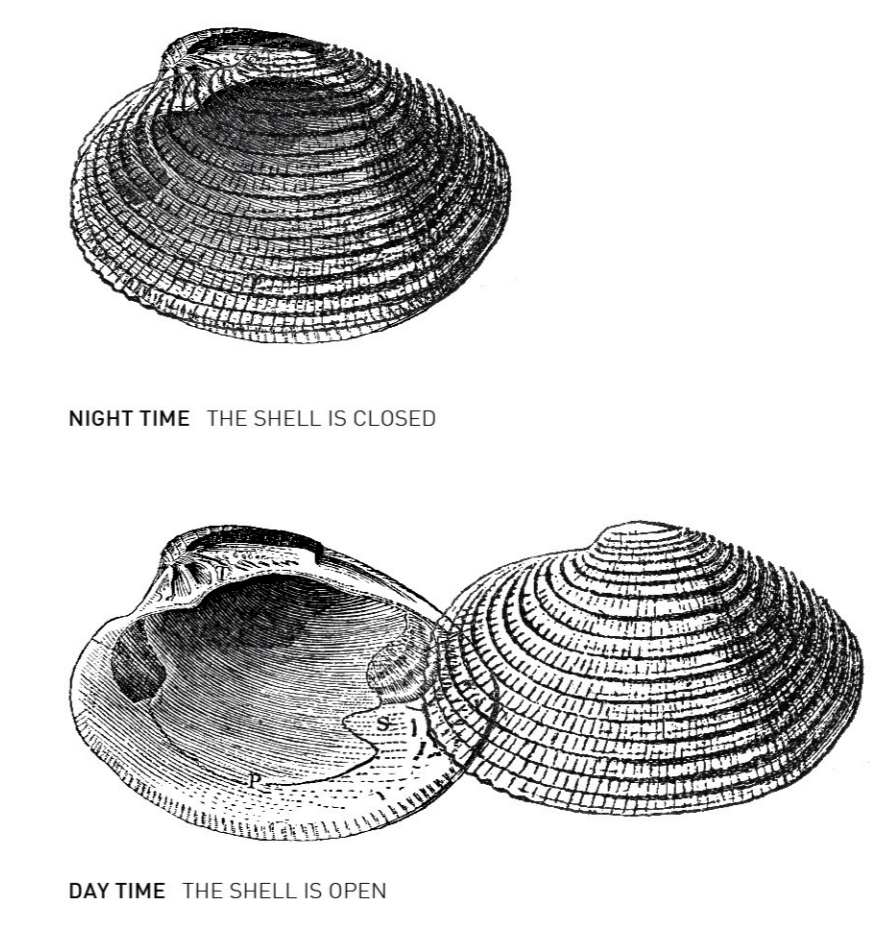


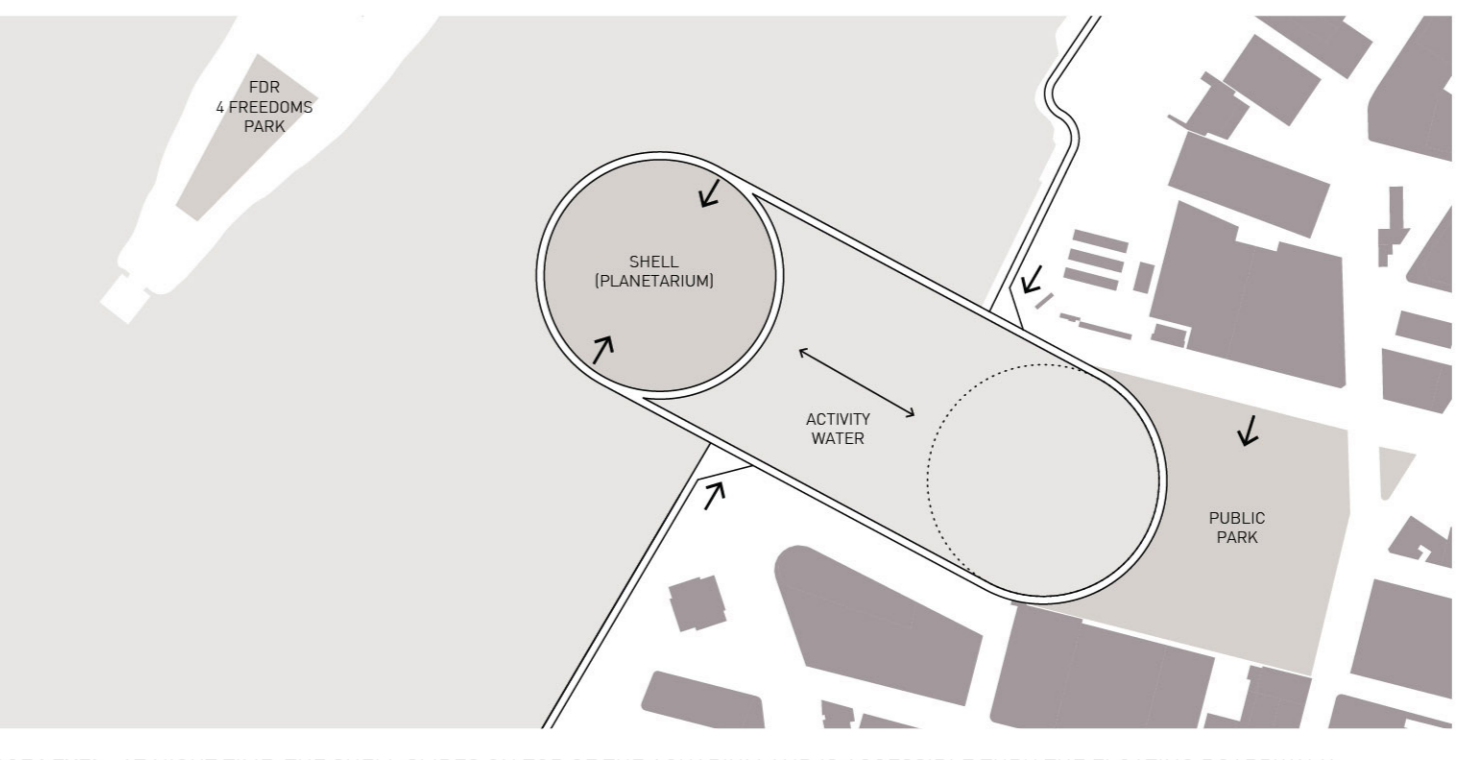
THE SUBMERGED AQUARIUM ISLAND OVERLOOKS THE FOUR FREEDOMS PARK AND THE MANHATTAN SKYLINE

# NYC AQUATRIUM

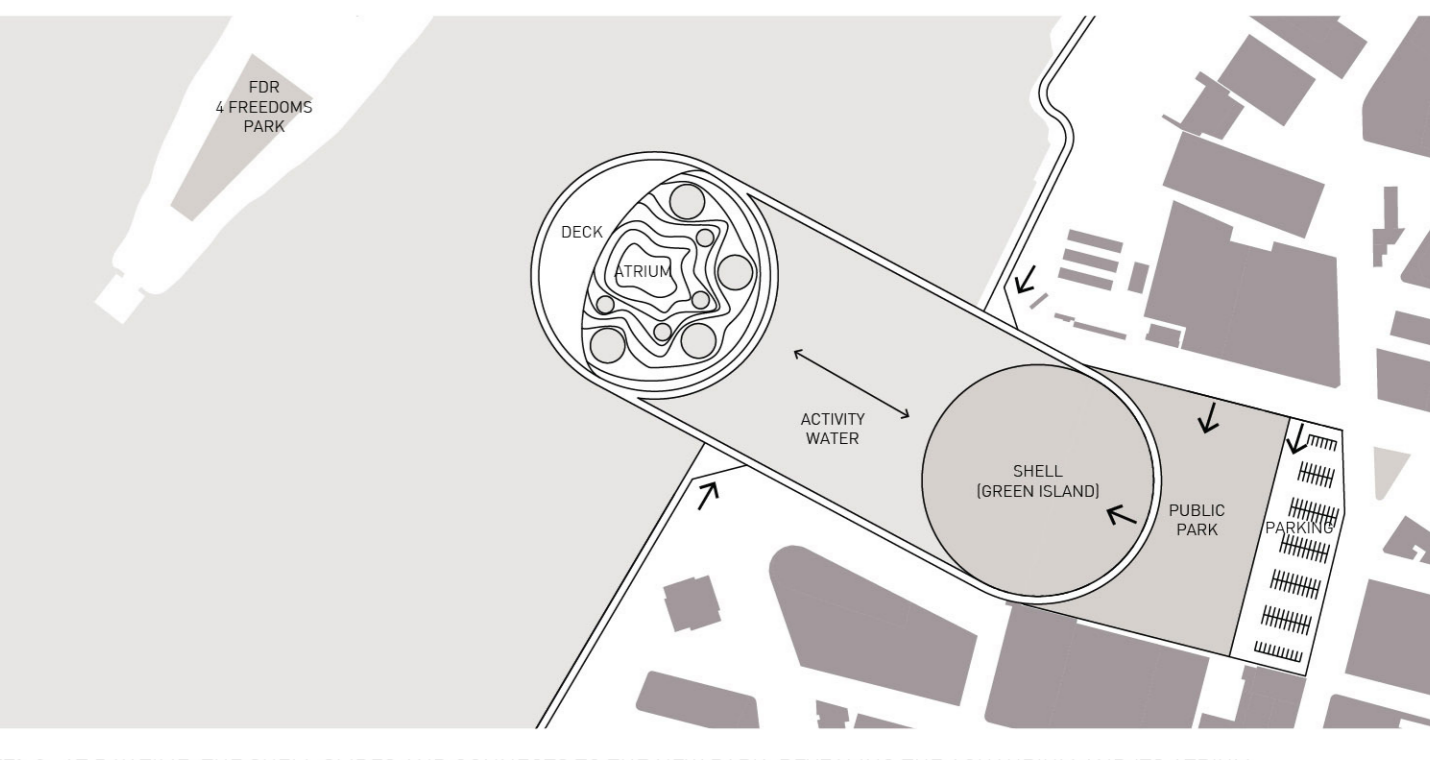
The project creates a dynamic system that interacts with its surroundings, offering multiple ways to experience the water world. The site is excavated to become a large and unique water basin, with the Aquarium and the Marine Centre a submerged island accessed via a pathway. A sloping beachfront covers the Parking area to form a panoramic public space, while a boardwalk surrounds the basin and becomes a floating ring connecting the two waterfronts and encompassing the Aquarium and its sliding roof, a green island that closes to become a planetarium protecting the arena and the biome domes within, like the shell protects the pearl.



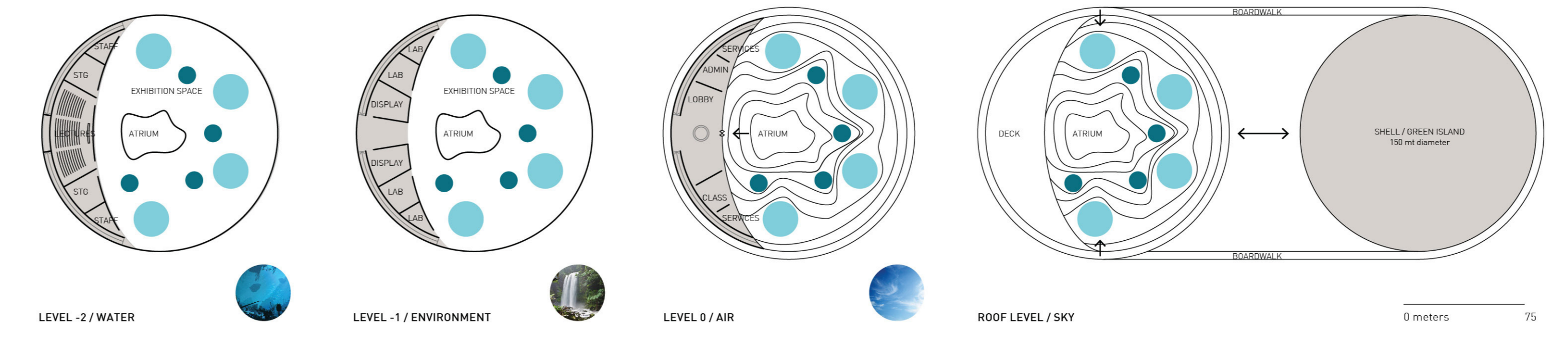
SITE: THE ENLARGED WATER BASIN IS ALIGNED TO THE MANHATTAN CITY GRID, AND IS SURROUNDED BY A NEW PARK.



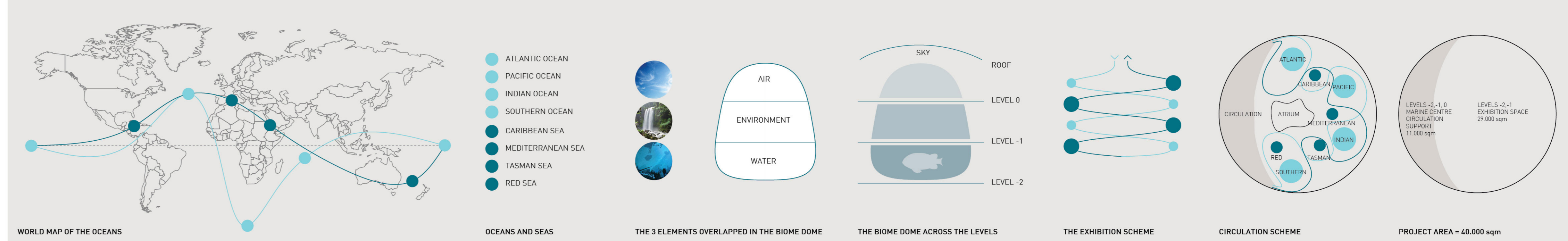
ROOF LEVEL: AT NIGHT TIME, THE SHELL SLIDES ON TOP OF THE AQUARIUM AND IS ACCESSIBLE THRU THE FLOATING BOARDWALK.



LEVEL 0: AT DAY TIME, THE SHELL SLIDES AND CONNECTS TO THE NEW PARK, REVEALING THE AQUARIUM AND ITS ATRIUM



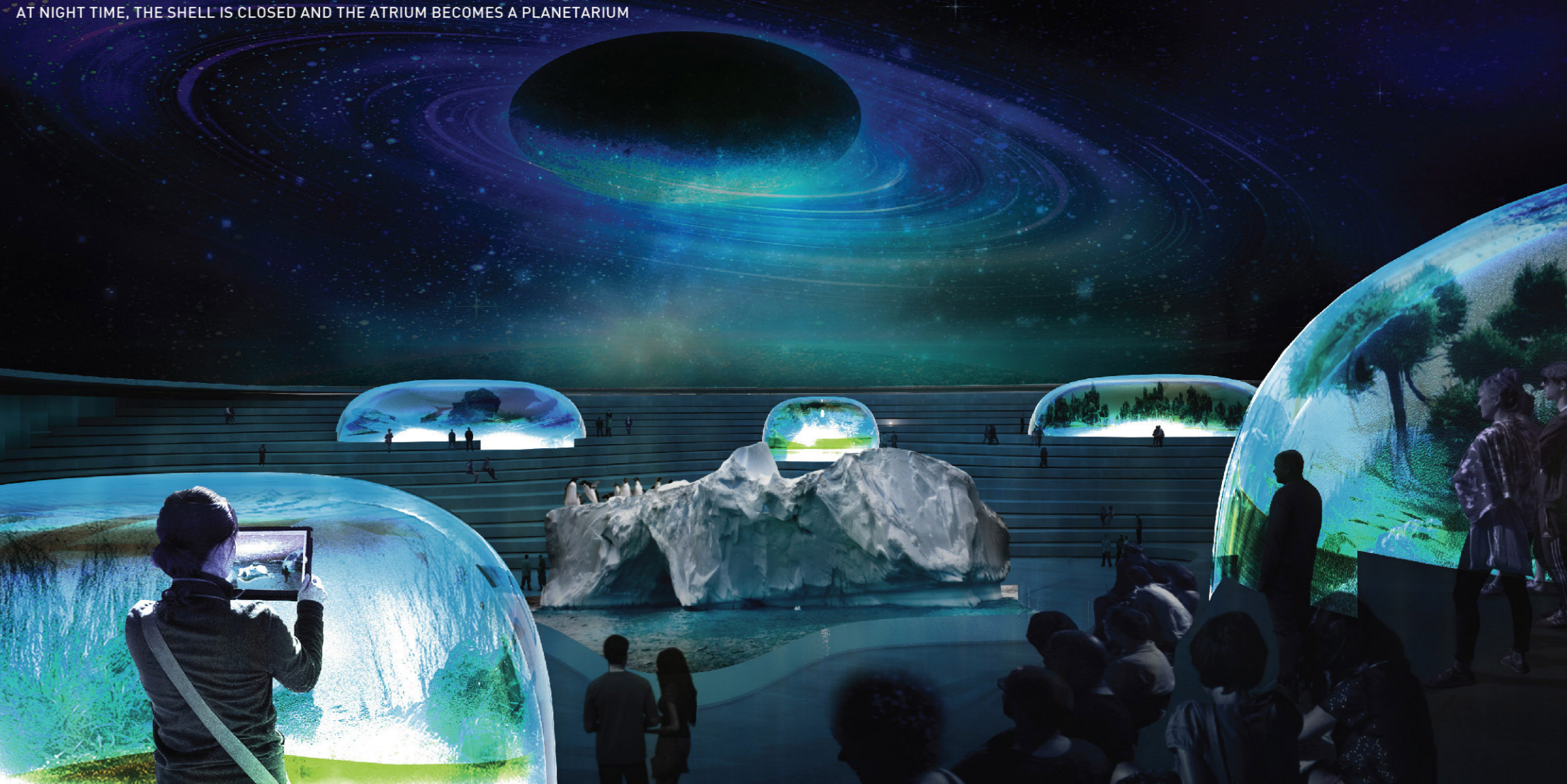
EXHIBITION DISPLAY OF OCEANS AND SEAS: THE BIOME COMES AT LEVEL -2 / WATER



WORLD MAP OF THE OCEANS, OCEANS AND SEAS, THE 3 ELEMENTS OVERLAPPED IN THE BIOME DOME, THE BIOME DOME ACROSS THE LEVELS, THE EXHIBITION SCHEME, CIRCULATION SCHEME, PROJECT AREA = 40,000 sqm



AT DAY TIME, THE SHELL OPENS AND THE ATRIUM BECOMES A COURTYARD OPEN TO THE SKY AND THE ACCESS TO THE AQUARIUM WORLD BEHIND



AT NIGHT TIME, THE SHELL IS CLOSED AND THE ATRIUM BECOMES A PLANETARIUM