

L.A.N.T.E.R.N.A.

Light And Nature for The East River Newyork Aquarium

Two landscapes are in front of people coming to the area: on one side the extraordinary granite garden of Midtown, Manhattan. On the other side a system of lanterns appears - a dream of water worlds. A new way to visit and enjoy an aquarium: LANTERNA is a life and light experience!

Tanks are linked with the surrounding environment and the urban context. The aquarium becomes a new landscape for people visiting the area, even if they won't enter it.

Moreover, while you are inside the aquarium you can appreciate views of the park, the waterfront or Manhattan skyline.

Fluxes of people arriving from the waterfront, from the subway, by car or by boat are all gathered "under the whale" or invited to take a walk along multi-layered paths in between the tanks.

Tanks are opened to the view: people walking along the river or along the main walk in the middle of the area are able to catch a glimpse of the water worlds inside the tanks.

There are many facilities in order to enjoy the area 24x7 and all year long. An open air cinema is just upon the auditorium, a system of squares on both sides of the basin invite people are to meet around LANTERNA and make it the new landmark in the mental map of the people living there or visiting the area.

LANTERNA is a special place to remind, a wonderful belvedere on Manhattan skyline.

For each one LANTERNA is able to tell a new story: the plot of layers is involving immediately in a non-ordinary space experience.

LANTERNA as a landscape for people running along the river, with new facilities for each season.

LANTERNA as a context for people coming to have fun, realizing a system of squares, walks and parks around the basin.

LANTERNA as entertainment for children and families, that aren't closed in a dark structure, but always feeling to be linked simultaneously to different parts of the water world and to the outside.

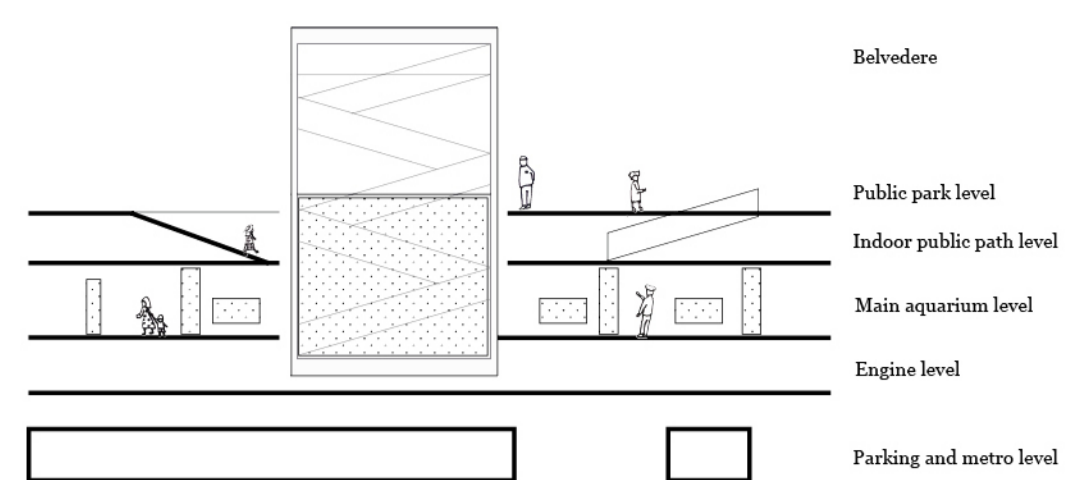
LANTERNA as a workplace for researchers. People coming to the aquarium for didactical or research purposes find here all the necessary facilities (bookshop, ticket office, coffee, rooms and laboratories...).

LANTERNA as a new background for daily life and special events (congress, seminars).

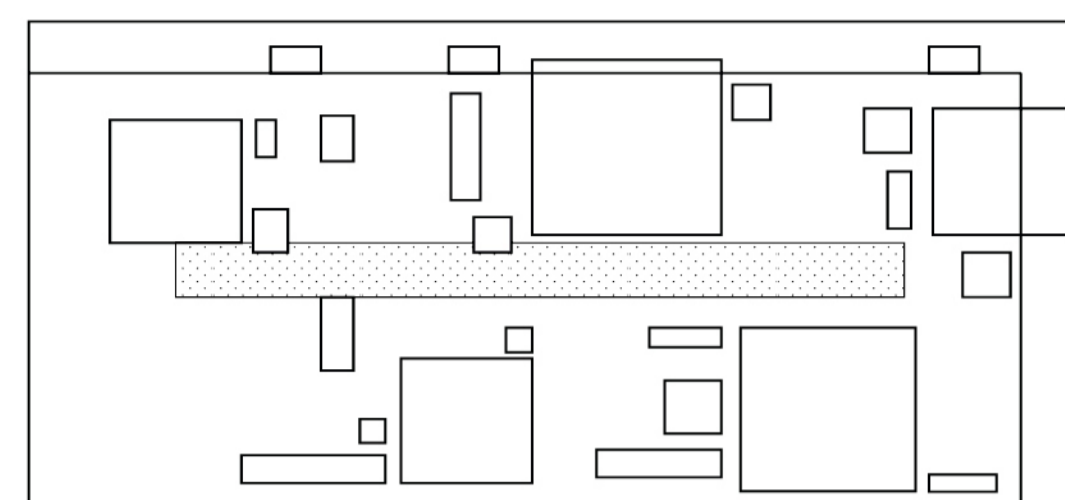
LANTERNA is a place able to accommodate different lifestyles, and a place where you can easily switch from one lifestyle to another.

LANTERNA is a capturing device: the light of water inside the light towers captures people moving by car along Vernon Blvd.

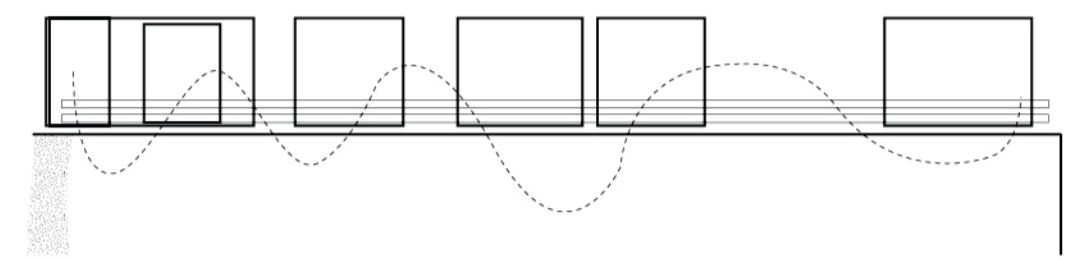
LANTERNA is a special place to remind, a wonderful belvedere on Manhattan skyline.



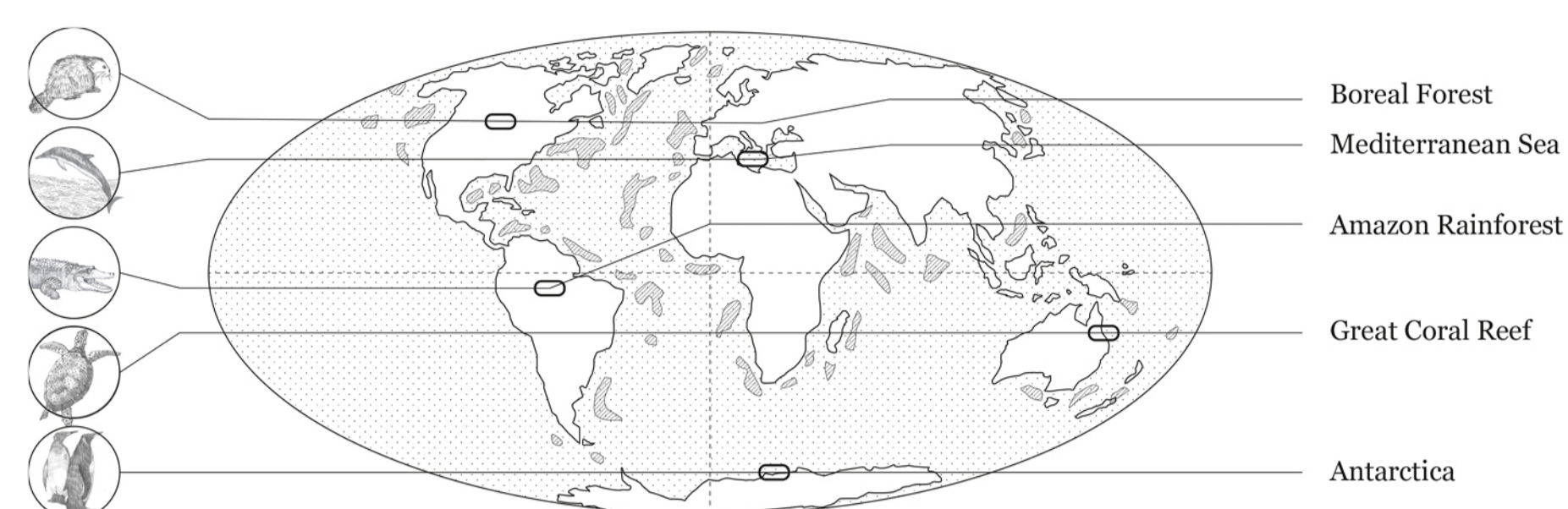
Section diagram
The biomes act not only as urban landmarks, but they also break the traditional way of visiting an aquarium, linking together the private, public and semi-public fluxes.



Exhibition plan diagram
The main biomes are surrounded by integrative water tanks creating a sequence of arcipelagos. In the center, a long and flat water pool creates unique views of the "underwater" landscape.



Marine research diagram
The research and education areas are the closest to the canal because of the primary importance of fresh and clean water. A system of phytodepuration plants helps cleaning the water, also to maximize the use of the canal by the visitors.



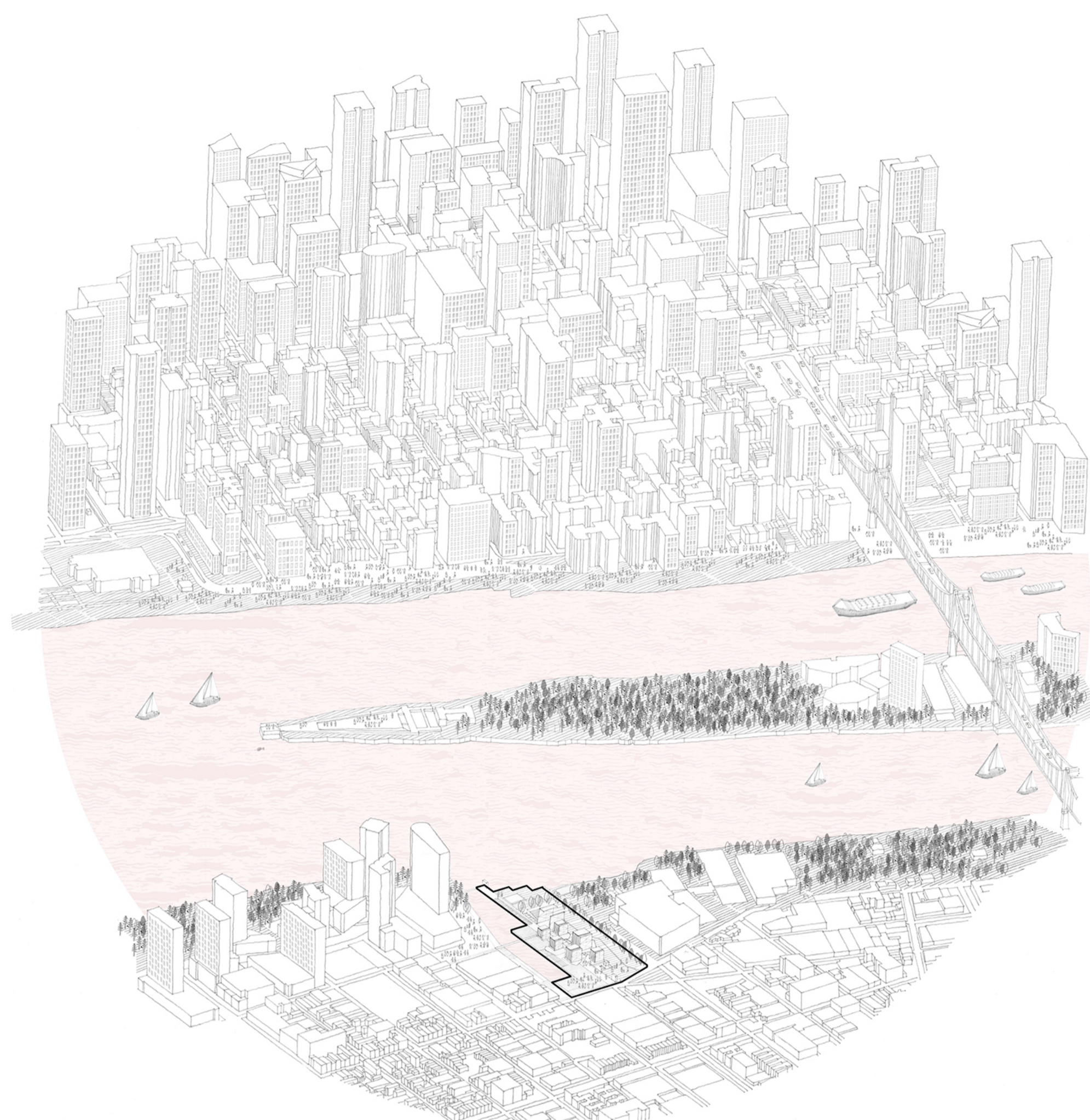
Chosen Ecosystem
Five of the main climate zones have been selected and proposed in the aquarium, hosted in the five lanterns which reproduce both the flora and fauna of the natural biomes. These structures allow the visitors to discover the environments in their complexity and from different points of view.



View of the mediterranean biome from the restaurant



The biomes appears as lanterns during the night



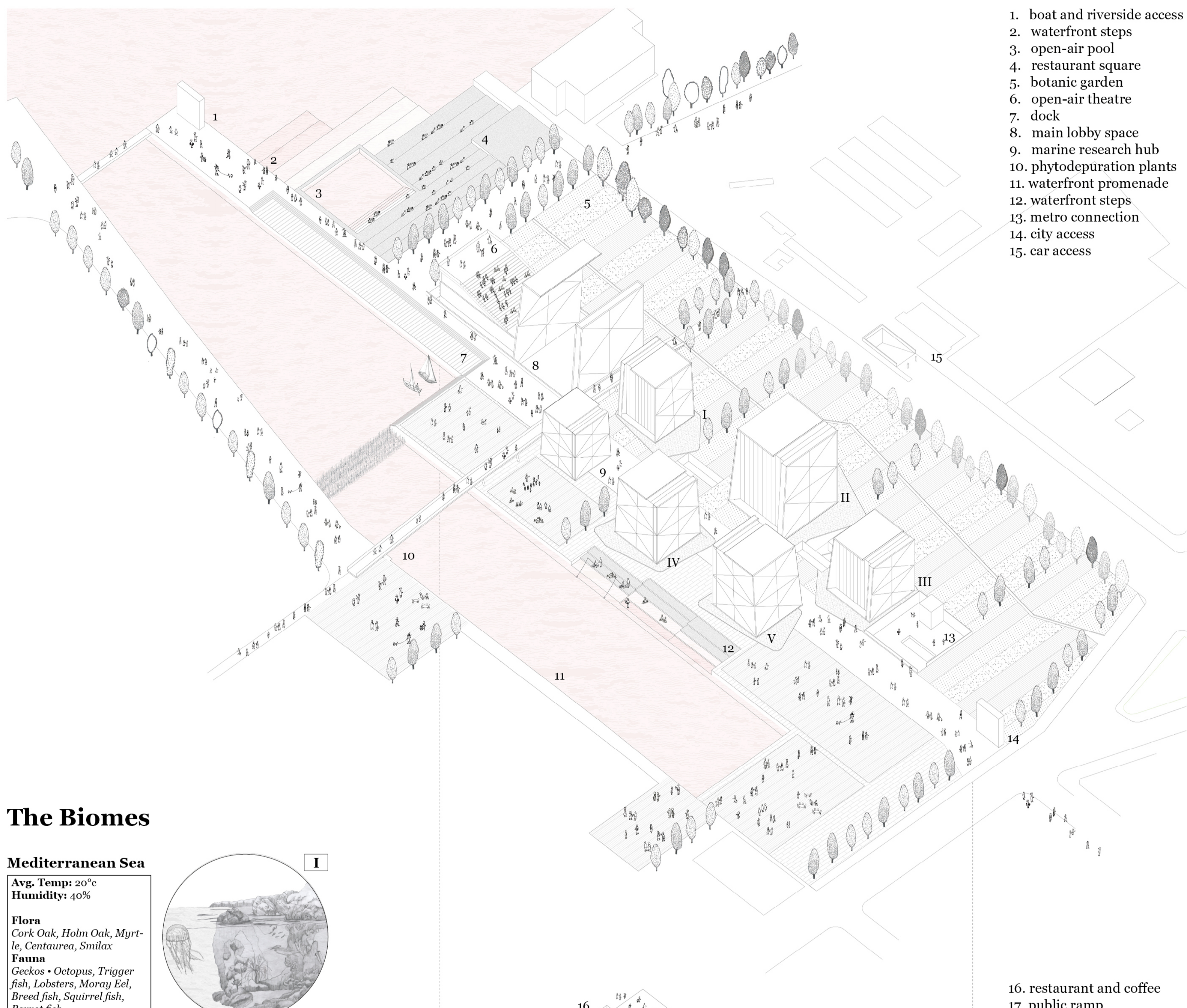
Midtown Manhattan, Roosevelt Island and LANTERNA from above



View of the waterfront in summer: high tide and pool



View of the waterfront in winter: the pool is used as an ice rink



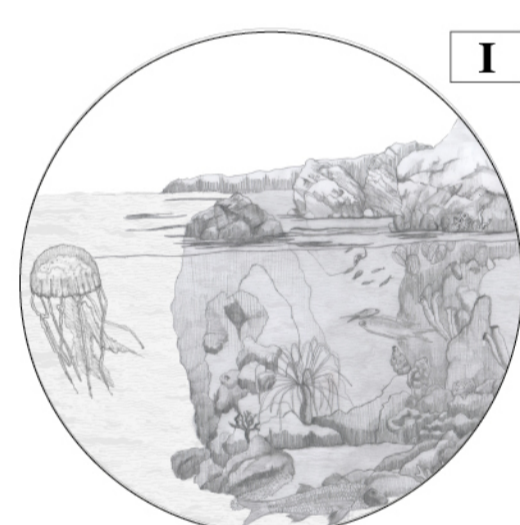
1. boat and riverside access
2. waterfront steps
3. open-air pool
4. restaurant square
5. botanic garden
6. open-air theatre
7. dock
8. main lobby space
9. marine research hub
10. phytodepuration plants
11. waterfront promenade
12. waterfont steps
13. metro connection
14. city access
15. car access

The Biomes

Mediterranean Sea

Avg. Temp: 20°C
Humidity: 46%

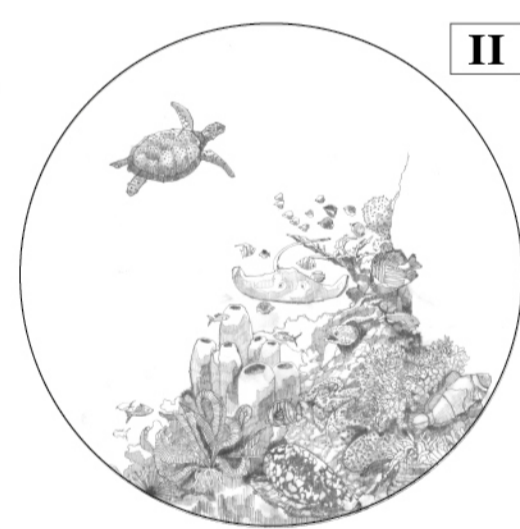
Flora
Cork Oak, Holm Oak, Myrtle, Centaurea, Smilax
Fauna
Geckos • Octopus, Trigger fish, Lobsters, Moray Eel, Breed fish, Squirrel fish, Parrot fish



Great Coral Reef

Avg. Temp: 24°C
Humidity: 70%

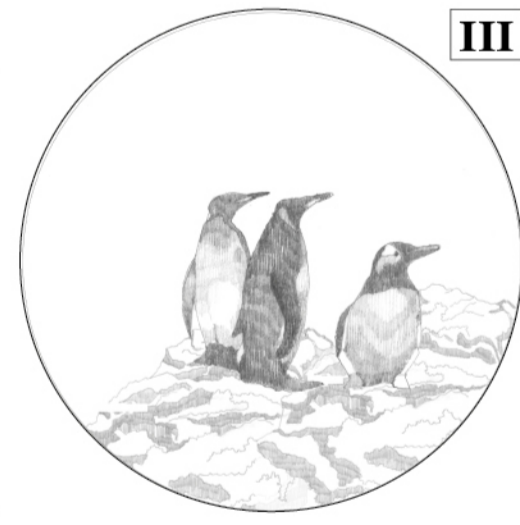
Flora
Algae, Seagrasses, Sponges, Mangroves,
Fauna
Jellyfish, Sea turtles, Sea star, Sharks, Rays, Sea horses, Squids, Shrimps



Antarctica

Avg. Temp: -10°C
Humidity: 0.3%

Flora
Frozen desert
Fauna
Penguins, Blue Wales, Orcas, Colossal Squids, Fur Seals, Silverfish, Icefish, Bathhydracos



Boreal Forest

Avg. Temp: 0°C
Humidity: 40%

Flora
Lichens, Mosses, Pines, White Spruce, Balsam Fir
Fauna
Weasels, Minks, Ermines, Rabbits, Blackfish, Northern Pike, Walleye, Whitefishes



Tropical Rainforest

Avg. Temp: 26°C
Humidity: 77-88%

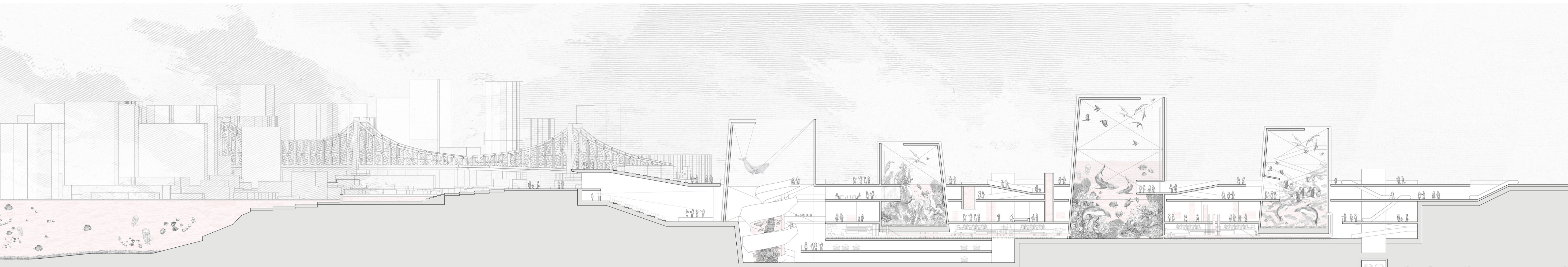
Flora
Bougainvillea, Coconut tree, Durian, Mangrove, Tualang
Fauna
Crocodiles, Toucan, Snakes, Frogs • Piranha, Discus Fish, Altum Angel, Rainbow Fish



16. restaurant and coffee
17. public ramp
18. public ramp with view
19. metro connection
20. auditorium
21. main access ramp
22. coffee and bookshop
23. cloakroom
24. ticket office
25. restrooms
26. research labs
27. administration
28. interactive classroom
29. kids laboratories
30. educational tanks
31. interactive classroom
32. seatings
33. parking

Axonometric view

0 10 20 50



Longitudinal section AA'

0 5 10 25